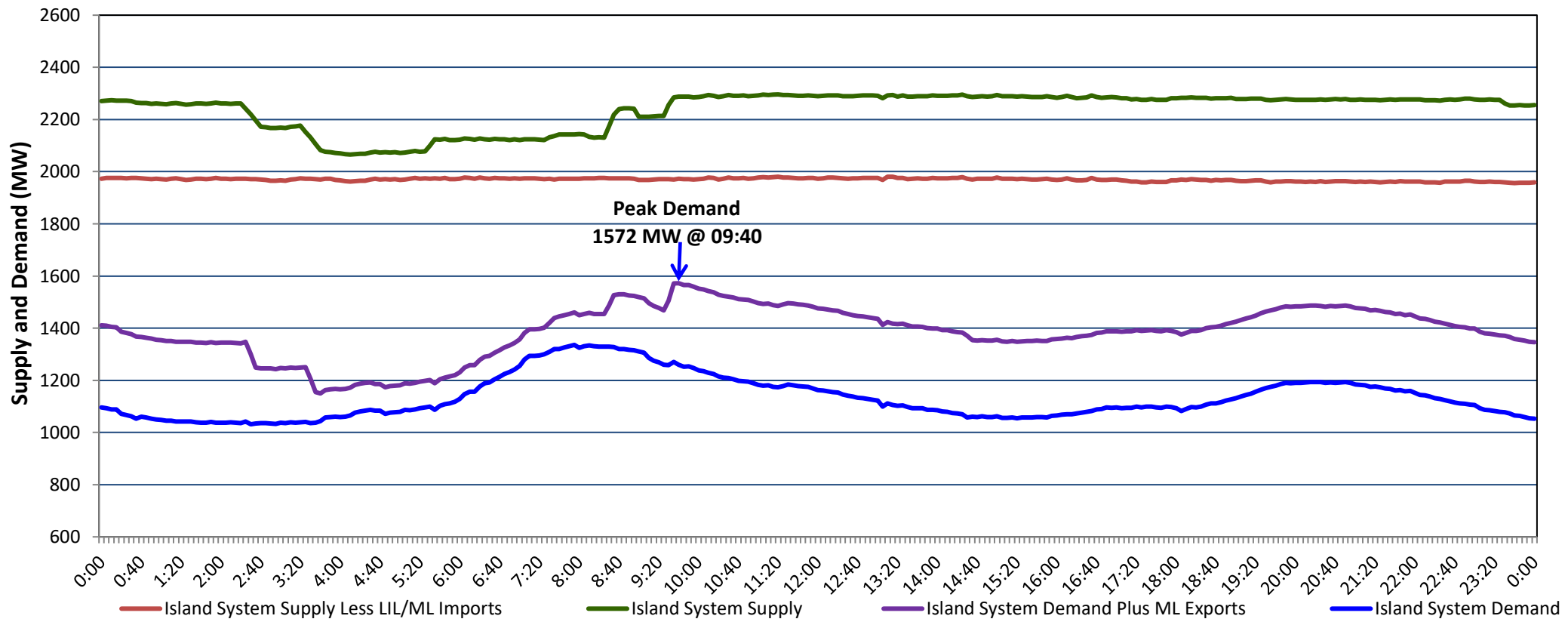


## Newfoundland Labrador Hydro (NLH) Supply and Demand Status Report Filed Tuesday, March 14, 2023

### Section 1 Island Interconnected System Supply, Demand & Exports Actual 24 Hour System Performance For Monday, March 13, 2023



#### Supply Notes For March 13, 2023

1,2

A As of 0701 hours, March 06, 2023, Upper Salmon Unit unavailable due to planned outage (84 MW).

### Section 2 Island Interconnected Supply and Demand

Tue, Mar 14, 2023	Island System Outlook <sup>3</sup>	Seven-Day Forecast	Temperature (°C)		Island System Daily Peak Demand (MW)	
			Morning	Evening	Forecast	Adjusted <sup>7</sup>
Available Island System Supply: <sup>5</sup>	1,950 MW	Tuesday, March 14, 2023	-3	-3	1,585	1,487
NLH Island Generation: <sup>4,8</sup>	1,610 MW	Wednesday, March 15, 2023	-3	-1	1,355	1,259
NLH Island Power Purchases: <sup>6</sup>	110 MW	Thursday, March 16, 2023	0	-1	1,350	1,254
Other Island Generation:	230 MW	Friday, March 17, 2023	0	1	1,250	1,156
ML/LIL Imports:	- MW	Saturday, March 18, 2023	0	-2	1,225	1,131
Current St. John's Temperature & Windchill:	-5 °C -11 °C	Sunday, March 19, 2023	-2	1	1,235	1,141
7-Day Island Peak Demand Forecast:	1,585 MW	Monday, March 20, 2023	0	-1	1,300	1,205

#### Supply Notes For March 14, 2023

3

- Notes:
1. Generation outages for running and corrective maintenance are included. These are not unusual for power system operations. They generally do not impact customer supply. The power system operators schedule outages to system equipment whenever possible to coincide with periods when customer demands are low and sufficient supply reserves are available. However, from time to time equipment outages are necessary and reserves may be impacted.
  2. Due to the Island system having no synchronous connections to the larger North American grid, when there is a sudden loss of large generating units there may be a requirement for some customer's load to be interrupted for short periods to bring generation output equal to customer demand. This automatic action of power system protection, referred to as under frequency load shedding (UFLS), is necessary to ensure the integrity and reliability of system equipment. Under frequency events have typically occurred 5 to 8 times per year on the Island Interconnected System and the resultant customer load interruptions are generally less than 30 minutes. With the activation of the Maritime Link frequency controller during the winter of 2018, UFLS events have occurred less frequently.
  3. As of 0800 Hours.
  4. Gross output including station service at Holyrood (24.5 MW) and improved NLH hydraulic output due to water levels (35 MW).
  5. Gross output from all Island sources (including Note 4).
  6. NLH Island Power Purchases include: CBPP Co-Gen, Nalcor Exploits, Rattle Brook, Star Lake, Wind Generation and capacity assistance (when applicable).
  7. Adjusted for curtailable load, market activities and the impact of voltage reduction when applicable.
  8. Due to limitations inherent in the design of combustion turbines, the output of combustion turbines may be reduced in the event that ambient temperatures exceed the threshold.

### Section 3 Island Peak Demand Information Previous Day Actual Peak and Current Day Forecast Peak

Mon, Mar 13, 2023	Actual Island Peak Demand <sup>9</sup>	9:40	1,572 MW
Tue, Mar 14, 2023	Forecast Island Peak Demand		1,585 MW

Notes: 9. Island Demand / LIL / ML Exports (where applicable) is supplied by NLH generation and purchases, plus generation owned and operated by Newfoundland Power and Corner Brook Pulp & Paper (Deer Lake Power, DLP).